



ENVIRONMENT AGENCY

Includes information based on that provided by Southern Water / Thames Water / Environment Agency
© Crown Copyright. All rights reserved. Environment Agency, 100026380, 2005 12/12/05

Water Quality and Growth in the South East (v10.2)

- Administrative district boundary.
- South East Region Boundary.
- Sub-Regional Strategy Area.

STW Catchment Area

- Opposed to growth beyond that already connected to STW.
- Limiting number of additional houses that can be connected to STW.
- Requires further study.

Note: All reference to place names refer to the sewerage catchment. These do not necessarily coincide with administrative areas of the same name.

The detail illustrated on this map should be read in context with the Water Quality and Growth in the South East Report

The constraints on this map are related to connecting future development to existing sewage treatment works. It may be acceptable to relocate the discharges in some cases. It may also be possible to build new STWs that discharge to a new location.

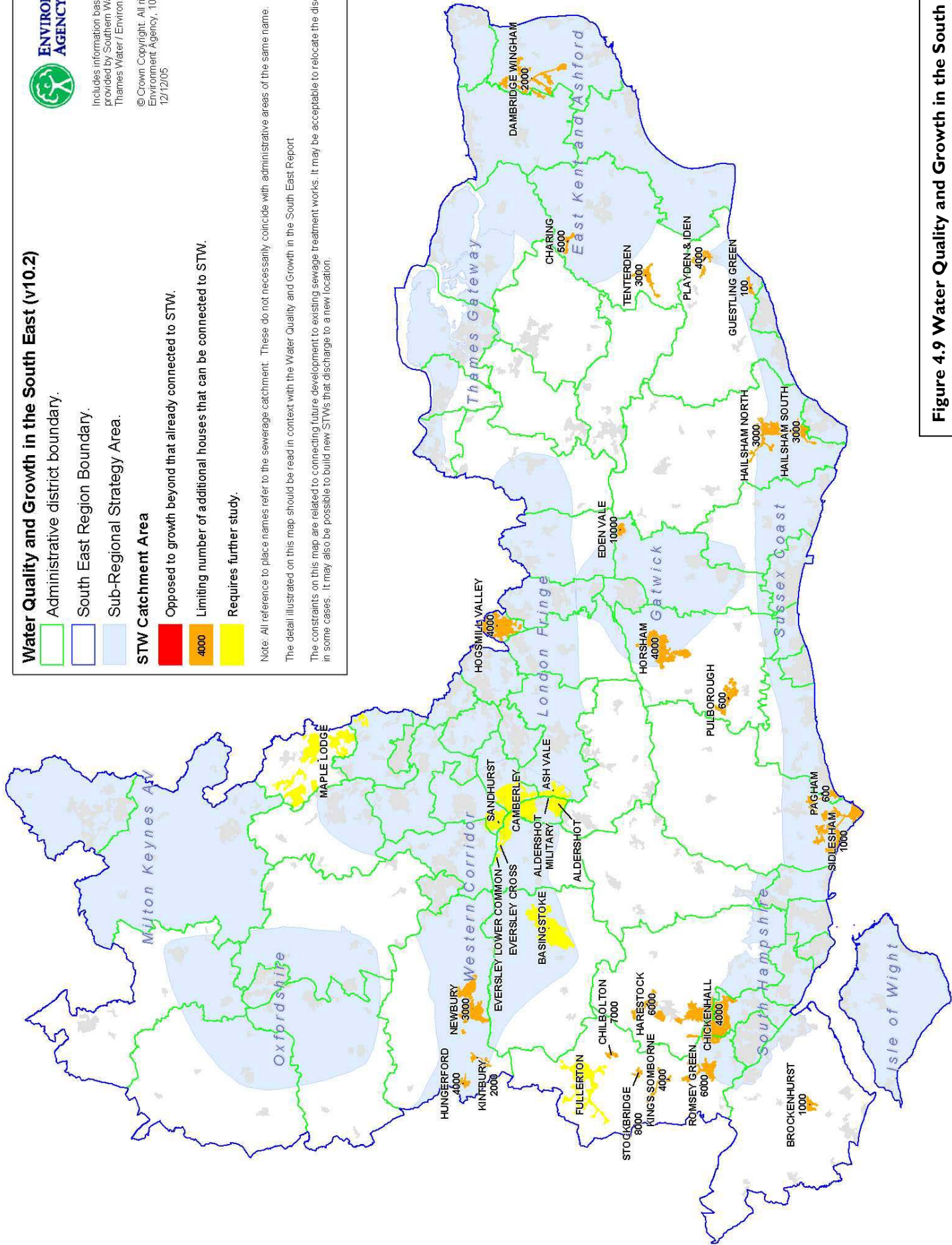


Figure 4.9 Water Quality and Growth in the South East